



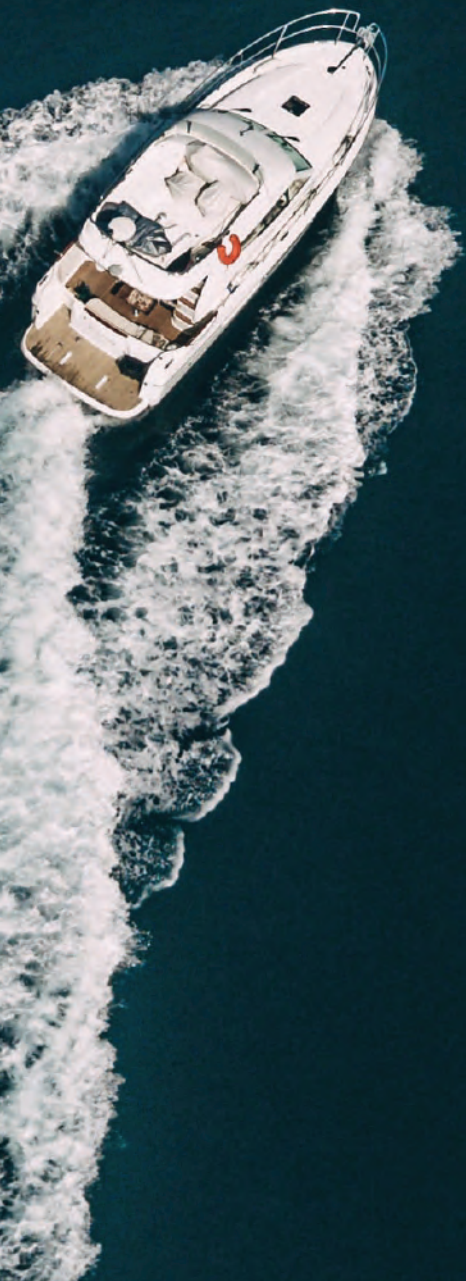
  
***Faria Beede***  
I N S T R U M E N T S

**MARINE**  
CATALOG  
**2023** |



# CONTENTS

ABOUT US	3
BRAND FAMILY	5
FEATURED PRODUCTS	7
NEWPORT	9
COLUMBIA	11
BLACK FADE	13
SPUN SILVER	13
PLATINUM	15
CHESAPEAKE WSS	17
CHESAPEAKE BSS	19
KRONOS	21
PROFESSIONAL RED	22
EURO WHITE	23
CORAL	24
EURO	25
DRESS WHITE	27
GPS SPEEDO	29
DEPTH SOUNDER	30
BOXED SETS	31
MULTIFUNCTION	32
TELEMATICS	33
ACCESSORIES	35
SENDERS	36
REPAIR POLICY	37
SPECIFICATIONS	38





## ABOUT US

Faria Beede Instruments, Inc. has been manufacturing gauges and instruments in Connecticut for more than 60 years. We offer analog and digital engine monitoring, as well as telematics solutions for a wide range of global marine, military, industrial and other types of commercial industries.

With the Indiana facilities, we have doubled our manufacturing capabilities and improved our state-of-the-art printed circuit board capabilities. This change makes Faria Beede digital instruments even more reliable than ever before.

One of the few remaining vertically integrated U.S. manufacturers of SAE J1939 instrumentation, Faria Beede provides some of the best turnaround times and responsive support in the industry. This is only possible by having total control of all aspects of design, engineering and manufacturing.

Whether you are in need of a simple analog instrument or a complete digital engine monitoring gauge, Faria Beede has the instrument solution that is right for you.

*Instruments for*

**Automotive  
Marine  
Commercial  
Industrial  
Performance  
Recreational  
Military**

[www.FariaBeede.com](http://www.FariaBeede.com)



Made in the USA

# RUGGED RELIABLE INNOVATIVE



# BRAND FAMILY



# BRAND FAMILY



A Riverside Brand

Leading the marine industry for 66 years. Whether you are in need of a simple analog instrument or a sophisticated digital engine monitoring gauge, Faria Beede has the solution that is right for you. We offer a wide range of products that are built rugged enough to survive on a military HMMWV (Humvee) or heavy construction equipment at the edge of the earth.



We've expanded our offerings by acquiring three brands you've counted on for quality and dependability—Faria Beede, VisionMark and TST (Transportation System Technologies). With their products included in our lineup, we're proud to offer manufacturing solutions for many different applications.

## CAPABILITIES:

Industrial Labels & Graphics  
Contract Mfg.  
Electronics Mfg.  
Custom Product Development

## LOCATIONS:

Fort Wayne, IN  
Sidney, OH  
Chesterfield, MI  
North Stonington, CT

## INDUSTRIES:

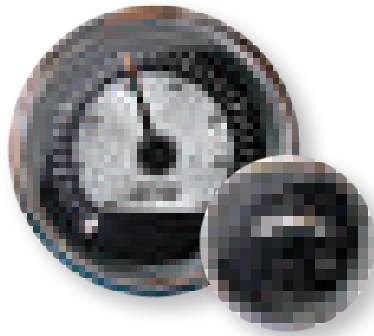
Work Truck  
Delivery  
Emergency  
Marine  
Snow & Ice Removal  
Construction  
& Many More!

# FEATURED PRODUCTS





# FEATURED PRODUCTS



Platinum  
Page 15



Black Fade  
Page 13



Columbia  
Page 11



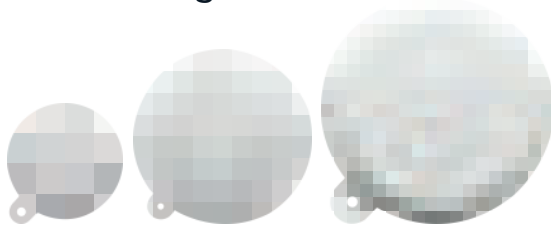
Newport  
Page 9



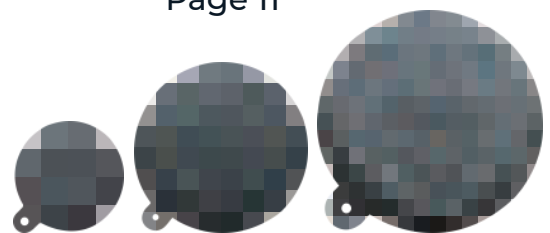
WD500  
Page 33



Fuel Flow  
Page 11



Covers  
Page 35



Covers  
Page 35

# NEWPORT STAINLESS STEEL

Perimeter lighted white dial with classic black and grey graphics, hand-polished stainless steel bezel, domed fog resistant lens and two piece pointer. Instruments illuminate red for improved low light visibility and connection type is studded.

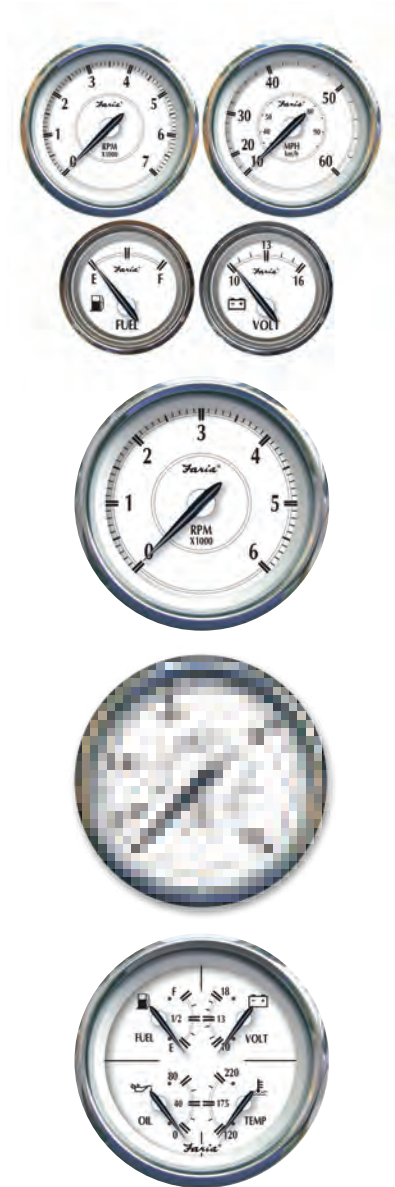
Catalog	Factory	Size	Description
KTF0200	KTF0200		Boxed Set - Inboard - Speedo (60 MPH) (Pitot)   Tach (6000 RPM)   Fuel Level Voltmeter (10-16 VDC)   Water Temp (100-250 F)   Oil PSI (80 PSI)
KTF0201	KTF0201		Boxed Set - Outboard - Speedo (60 MPH) (Pitot)   Tach (7000 RPM) Fuel Level   Voltmeter (10-16 VDC)

Tachometers			
F45000	TC9491	4	Tachometer (7000 RPM) with SystemCheck Indicator (Gas) (I/E Outboard)
F45001	TC9496	4	Tachometer (7000 RPM) with Suzuki Monitor (Gas) (Suzuki)
F45002	TD9516	4	Tachometer (6000 RPM) (Gas) (Inboard & I/O)
F45003	TC9518	4	Tachometer (7000 RPM) (All Outboard)
F45004	TCH253	4	Tachometer with Hourmeter (6000 RPM) (Gas) (Inboard & I/O)
F45005	TCH324	4	Tachometer with Hourmeter (7000 RPM) (All Outboard)
F45006	TDH271	4	Tachometer with Hourmeter (4000 RPM) (Diesel) (Mag Pick-Up)
F45007	TDH272	4	Tachometer with Hourmeter (4000 RPM) (Diesel) (Mech takeoff & var ratio alt)
F45013	TC9533	5	Tachometer (6000 RPM) (Gas) (Inboard & I/O)

Speedometers			
F45008	SE9867	4	Speedometer (35 MPH) (Pitot)
F45009	SE9901	5	Speedometer (60 MPH) (Pitot)
F45010	SE9902	4	Speedometer (60 MPH) (Pitot)

GPS Speedometers			
F45011	SGP129	4	Speedometer (60 MPH) (GPS) (Studded)

Multi-Function Instruments			
F45012	GF0128	4	Multifunction [Fuel   Oil (80 PSI)   Water Temp (120-220 F)   Voltmeter 10-18]





Indicators			
F25000	GP8158	2	Fuel Level Gauge (E-1/2-F)
F25001	GP8159	2	Oil Pressure Gauge (80 PSI)
F25002	GP8160	2	Water Temperature Gauge (100-250 F)
F25003	GP8161	2	Trim Gauge (Mercury/Mariner/Mercruiser/Volvo DP/Yamaha-2001 and newer)
F25004	GP8184	2	Trim Gauge (Honda)
F25005	GP8185	2	Oil Pressure Gauge (100 PSI)
F25006	GP8186	2	Rudder Angle Indicator
F25007	GP8187	2	Trim Gauge (Mercury/Mariner/Mercruiser/Volvo DP/Yamaha-2001 and newer)
F25008	OP1189	2	Water Pressure Gauge Kit (30 PSI)
F25009	VP4081	2	Voltmeter (10-16 VDC)
F25010	MH0247	2	Hourmeter (Digital) (12-32 VDC)
F25011	GP8188	2	Cylinder Head Temperature (60 - 220 F) with sender



# COLUMBIA

Premium perimeter lighted black and spun dial, hand polished stainless steel bezel, domed fog resistant lens, fire orange backlighted pointer and red LED lighting for improved low light visibility. Connection type is premium deutsch connection. (harness included to reduce installation time)

Catalog	Size	Description
<b>Tachometers</b>		
F46000	5	Tachometer w/ Hourmeter & Volt(KIT, 5" 3-1 7KT/HR, F,V, I/O O/B COLUMBIA RED)
F46001	5	Tachometer w/ Hourmeter, Oil Press & Water Temp (KIT, 5" 3-1,7K T/HR, O,WT I/O O/B COLUMBIA RED)

GPS Speedometers		
F46002	5	GPS Speedometer (KIT, 5" 2-1 60MPH GPS IN/AN, COLUMBIA RED)
F46003	5	GPS Speedometer (KIT, 5" 60MPH GPS IN/AN,COLUMBIA RED)
F46004	5	GPS Speedometer (KIT, 5" 3-1 60MPH,MERC/F,GPS IN/AN,COLUMBIA RED)

GPS Speedometers		
F46005	5	Mechanical (Pitot) Speedo w/ BRP Trim (KIT, 5" 2-1 45MPH MECH, BRP, COLUMBIA RED)
F46006	5	Mechanical (Pitot) Speedo w/ Merc/Yam Trim (KIT, 5" 2-1 45MPH MECH, MERC/YAM,COLUMBIA RED)
F46007	5	Mechanical (Pitot) Speedo (KIT, 5" 45 MPH MECH, COLUMBIA RED)
F26000	2	Indicator (KIT, 5" 45 MPH MECH, COLUMBIA RED)



# FUEL FLOW

2" Touchscreen Fuel Flow Display. The intuitive daylight readable NMEA2000 device operates with Lowrance and Garmin N2K Fuel Flow Sensors for gasoline powered marine engines. Product is industry-standard 2" cutout with hand polished stainless steel bezel and deutsch connector for plug and play installation. Features include instantaneous fuel flow, total fuel used, range, and fuel level.

Catalog	Size	Description
FM0031	2	Fuel Flow Gauge, SS bezel, packaged in Clamshell plastic
KTFFM31	2	Fuel Flow Gauge, SS bezel, and Navico transducer, packaged in TBD clamshell/box
FFM032	2	Fuel Flow Gauge, Black bezel, packaged in Clamshell plastic
KTFFM32	2	Fuel Flow Gauge, Black bezel, and Navico transducer, packaged in TBD clamshell/box





# NEW STYLES

# BLACK FADE

Polished Black Bezel, Domed Fog Resistant Glass Lens, Perimeter Lighted Spun Aluminum dial with White and Black faded graphics. LED back lighted orange pointer.

Catalog	Factory	Size	Description
<b>Speedometers</b>			
F41006	MGS023	5	Speedometer with Depth (70 MPH)

<b>Tachometers</b>			
F41001	MGT017	4	Tachometer (7000 RPM) (NMEA2K)
F41002	MGT018	4	Tachometer (7000 RPM) (SmartCraft)
F41007	MGT022	5	Tachometer (7000 RPM) (J1939)
F41008	MGT023	5	Tachometer (7000 RPM) (SmartCraft)



# SPUN SILVER

Perimeter-lighted silver dial with bold black graphics, polished stainless steel bezel, contoured black pointer, and domed glass lens.

Catalog	Factory	Size	Description
KTF0184	KTF0184		<b>Boxed Set</b> - Inboard - Speedo (65 MPH) (Mech)   Tach (7000 RPM)   Fuel Level   Voltmeter (10-16 VDC)   Water Temp (100-250 F)   Oil PSI (80 PSI)

<b>Tachometers</b>			
F36004	TC9476	4	Tachometer (6000 RPM) (Gas) (Inboard & I/O)
F36005	TC9004	4	Tachometer (7000 RPM) (All outboard)
F36032	TC9196	4	Tachometer with Hourmeter (6000 RPM) (Gas) (Inboard)

<b>Speedometer</b>			
F36010	SE9910	4	Speedometer (65 MPH) (Pitot)

<b>Indicators</b>			
F16001	GP9932	2	Fuel Level Gauge (E-1/2-F)
F16004	GP9428	2	Water Temperature Gauge (100-250 F)
F16002	GP9423	2	Oil Pressure Gauge (80 PSI)
F16020	MH0114	2	Hourmeter (10,000 hrs) (12-32 VDC)
F16016	GP9223	2	Trim Gauge (Mercury/Mariner/Mercruiser/ Volvo DP/ Yamaha-2001 and newer)
F16023	VP9223	2	Voltmeter (10-16 VDC)





# BESTSELLER

# PLATINUM

Polished Stainless Steel Bezel, Domed Fog Resistant Glass Lens, Perimeter Lighted Spun Aluminum dial with White and Black graphics. LED back lighted pointer with orange tip.

Catalog	Factory	Size	Description
KTF0186	KTF0186		<b>Boxed Set</b> - Inboard - Speedo (70 MPH) (Mech)   Tach (7000 RPM)   Fuel Level   Voltmeter (10-16 VDC)   Water Temp (100-250 F)   Oil PSI (80 PSI)
KTF0185	KTF0185		<b>Boxed Set</b> - Outboard - Speedo (70 MPH) (Mech)   Tach (7000 RPM)   Fuel Level   Voltmeter (10-16 VDC)

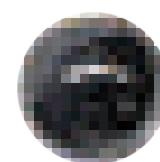
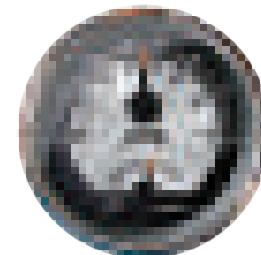
Depth Sounders			
F22025	DS0176	2	Depth Sounder (In-Hull Mounted Transducer)

Tachometers			
F22009	TC8511	4	Tachometer (7000 RPM) (Gas) (Inboard, Outboards & I/O)

Speedometers			
F22010	SGP128	4	Speedometer (60 MPH) (GPS) (Studded)
F22012	SE9864	4	Speedometer (50 MPH) (Pitot)
F22011	SE9863	4	Speedometer (70 MPH) (Pitot)

Multi-Function Instruments			
F22014	GF0417	4	Multifunction [Fuel Level   Oil PSI (80 PSI)   Water Temp (120-220 F)   Voltmeter (10-18 VDC)]
F22015	GS0075	4	Multifunction [Speedometer (65 MPH) (Pitot)   Fuel Level]
F22016	GT0104	4	Multifunction [Tachometer (7000 RPM)   Voltmeter (10-16 VDC)]
F22013	GF0275	4	Multifunction [Fuel Level   Voltmeter (10-16 VDC)]

Indicators			
F22021	GP5088	2	Fuel Level Gauge (E-1/2-F)
F22024	GP5089	2	Oil Pressure Gauge (80 PSI)
F22023	OP1177	2	Water Pressure Gauge Kit (30 PSI)
F22017	GP5084	2	Water Temperature Gauge (100-250 F)
F13715	MH239	2	Hourmeter [Digital] (12-32 volts)
F22019	GP5086	2	Trim Gauge (Mercury/Mariner/Mercruiser/ Volvo DP/ Yamaha-2001 and newer)
F22018	GP5085	2	Trim Gauge (Honda)
F22020	GP5087	2	Trim Gauge (J/E/Suzuki Outboard)
F22022	VP7179	2	Voltmeter (10-16 VDC)







# POLISHED

# CHESAPEAKE WHITE STAINLESS STEEL

Perimeter-lighted white dial with stylish blue and black graphics, polished stainless steel bezel, contoured black pointer, and domed glass lens.

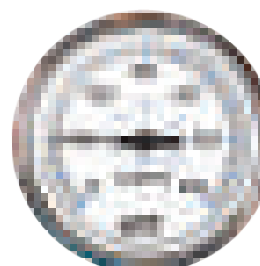
Catalog	Factory	Size	Description
KTF001	KTF001		<b>Boxed Set</b> - Inboard - Speedo (60 MPH) (Mech)   Tach (6000 RPM)   Fuel Level   Voltmeter (10-16 VDC)   Water Temp (100-250 F)   Oil PSI (80 PSI)
KTF063	KTF063		<b>Boxed Set</b> - Inboard - Speedo (60 MPH) (GPS)   Tach (6000 RPM)   Fuel Level   Voltmeter (10-16 VDC)   Water Temp (100-250 F)   Oil PSI (80 PSI)
KTF002	KTF002		<b>Boxed Set</b> - Outboard - Speedo (60 MPH) (Mech)   Tach (7000 RPM)   Fuel Level   Voltmeter (10-16 VDC)

Depth Sounders			
F13852	DS1004	2	Depth Sounder with Air and Water Temperature (Transom Mounted Transducer)
F13850	DS0110	2	Depth Sounder (Transom Mounted Transducer)
F13851	DS0110	2	Depth Sounder (In-Hull Mounted Transducer)

Tachometers			
F33807	TC9796	4	Tachometer (6000 RPM) (Gas) (Inboard & I/O)
F33817	TC9002	4	Tachometer (7000 RPM) (All outboard)
F33842	TD9128	4	Tachometer (4000 RPM) (Diesel) (Mechanical takeoff & var ratio alt)
F33818	TD9733	4	Tachometer (4000 RPM) (Diesel) (Mag Pick-Up)
F33863	TC9381	5	Tachometer with Hourmeter (6000 RPM) (Gas) (Inboard)
F33832	TC9128	4	Tachometer with Hourmeter (6000 RPM) (Gas) (Inboard)
F33840	TCH008	4	Tachometer w/ Hourmeter (7000 RPM) (Gas)(Outboard)
F33834	TD9108	4	Tachometer with Hourmeter (4000 RPM) (Diesel) (Mech takeoff & var ratio alt)
F33850	TC9881	4	Tachometer (7000 RPM) with SystemCheck Indicator (Gas) (I/E Outboard)

GPS Speedometers			
F33861	SGP502	5	Speedometer (60 MPH) (GPS) (Studded)
F33829	SGP010	4	Speedometer (80 MPH) (GPS)
F33826	SGP003	4	Speedometer (60 MPH) (GPS)
F33839	SGP113	4	Speedometer (60 MPH) (GPS) (Studded)

Speedometers			
F33811	SE9521	4	Speedometer (60 MPH) (Pitot)
F33819	SE9522	4	Speedometer (80 MPH) (Pitot)



# CHESAPEAKE WHITE STAINLESS STEEL



## Multi-Function Instruments

F33801	SY9629	4	Synchronizer (Dual Engine) Gas and Variable Ratio / Alternator type diesels only.
F33864	GF4004	5	Multifunction [Fuel Level   Oil PSI (80 PSI)   Water Temp (120-220 F)   Voltmeter (10-18 VDC)]
F33851	GF0008	4	Multifunction [Fuel Level   Oil PSI (80 PSI)   Water Temp (120-220 F)   Voltmeter (10-18 VDC)]

## Indicators

F13801	GP9373	2	Fuel Level Gauge (E-1/2-F)
F13818	GP9791	2	Fuel Level Gauge (Metric)
F13802	GP9647	2	Oil Pressure Gauge (80 PSI)
F13812	OP1022	2	Water Pressure Gauge Kit (30 PSI)
F13806	GP9454	2	Cylinder Head Temperature (60 - 220 F) with sender
F13804	GP9146	2	Water Temperature Gauge (100-250 F)
F13828	GP9178	2	Water Temperature Gauge (40-120 C) (Metric)
F13891	CL1026	2	Clock (Quartz) (Analog)
F13889	GP7440	2	Trim Gauge (Honda)
F13807	GP9649	2	Trim Gauge (Mercury/Mariner/MerCruiser/Volvo DP/ Yamaha-2001 and newer)
F13809	GP9418	2	Trim Gauge (J/E/Suzuki Outboard)
F13808	GP9734	2	Trim Gauge (OMC Cobra (1993-1994) / Volvo SX (MD models only))
F13822	GP7378	2	Rudder Angle Indicator
F13815	MH0211	2	Hourmeter [Digital] (12-32 volts)
F13805	VP9158	2	Voltmeter (10-16 VDC)



# CHESAPEAKE BLACK STAINLESS STEEL

Perimeter-lighted black dial with stylish blue and white graphics, polished stainless steel bezel, contoured white pointer, and domed glass lens.

Catalog	Factory	Size	Description
KTF003	KTF003		<b>Boxed Set</b> - Inboard - Speedo (60 MPH) (Mech)   Tach (6000 RPM)   Fuel Level   Voltmeter (10-16 VDC)   Water Temp (100-250 F)   Oil PSI (80 PSI)
KTF064	KTF064		<b>Boxed Set</b> - Inboard - Speedo (60 MPH) (GPS)   Tach (6000 RPM)   Fuel Level   Voltmeter (10-16 VDC)   Water Temp (100-250 F)   Oil PSI (80 PSI)
KTF004	KTF004		<b>Boxed Set</b> - Outboard - Speedo (60 MPH) (Mech)   Tach (7000 RPM)   Fuel Level   Voltmeter (10-16 VDC)
Depth Sounders			
F13752	DS1002	2	Depth Sounder with Air and Water Temperature (Transom Mounted Transducer)
F13750	DS0111	2	Depth Sounder (Transom Mounted Transducer)
F13751	DS0111	2	Depth Sounder (In-Hull Mounted Transducer)
F13795	DS0111	2	Depth Sounder (Thru-Hull Transducer) (Requires 1 5/8" hole in vessel.)
Tachometers			
F33710	TC9785	4	Tachometer (6000 RPM) (Gas) (Inboard & I/O)
F33718	TC9035	4	Tachometer (7000 RPM) (All outboard)
F33742	TD9127	4	Tachometer (4000 RPM) (Diesel) (Mechanical takeoff & var ratio alt)
F33763	TCH323	5	Tachometer with Hourmeter (6000 RPM) (Gas) (Inboard)
F33732	TC9127	4	Tachometer with Hourmeter (6000 RPM) (Gas) (Inboard)
F33750	TC9884	4	Tachometer (7000 RPM) with SystemCheck Indicator (Gas) (I/E Outboard)
GPS Speedometers			
F33761	SGP501	5	Speedometer (60 MPH) (GPS) (Studded)
F33730	SGP012	4	Speedometer (80 MPH) (GPS) (LCD)
F33726	SGP004	4	Speedometer (60 MPH) (GPS) (LCD)
F33749	SGP114	4	Speedometer (60 MPH) (GPS) (Studded)
Speedometers			
F33704	SE9509	4	Speedometer (60 MPH) (Pitot)
Multi-Function Instruments			
F33762	GF4005	5	Multifunction [Fuel Level   Oil PSI (80 PSI)   Water Temp (120-220 F)   Voltmeter (10-18 VDC)]
F33751	GF0007	4	Multifunction [Fuel Level   Oil PSI (80 PSI)   Water Temp (120-220 F)   Voltmeter (10-18 VDC)]
Indicators			
F13701	GP9368	2	Fuel Level Gauge (E-1/2-F)
F13721	GP9777	2	Fuel Level Gauge (Metric)
F13702	GP9640	2	Oil Pressure Gauge (80 PSI)
F13712	OP1018	2	Water Pressure Gauge Kit (30 PSI)
F13704	GP9142	2	Water Temperature Gauge (100-250 F)
F13707	GP9402	2	Trim Gauge (Mercury/Mariner/Mercruiser/Volvo DP/Yamaha-2001 and newer)
F13709	GP9414	2	Trim Gauge (I/E/Suzuki Outboard)
F13736	AP9530	2	Ammeter (60-0-60)
F13715	MH0239	2	Hourmeter [Digital] (12-32 volts)
F13725	GP7377	2	Rudder Angle Indicator
F13705	VP9154	2	Voltmeter (10-16 VDC)



# POLISHED SPUN



# KRONOS

Polished Stainless Steel Bezel, Flat Glass Lens, Perimeter Lighted Spun Aluminum dial with Gold and Black graphics. Gold increments and Logo on dial are Embossed. All instruments include two piece Newport Pointer with White Hub.

Catalog	Factory	Size	Description
KTF024	KTF024		<b>Boxed Set</b> - Inboard - Speedo - 60 MPH (Mech)   Tach (6000 RPM)   Fuel Level   Voltmeter (10-16 VDC)   Water Temp (100-250 F)   Oil PSI (80 PSI)

Depth Sounders			
F19150	DS0131	2	Depth Sounder (In-Hull Mounted Transducer)

Tachometers			
F39004	TC9983	4	Tachometer (6000 RPM) (Gas) (Inboard & I/O)
F39005	TC9252	4	Tachometer (7000 RPM) (All outboard)
F39040	TCH305	4	Tachometer with Hourmeter (7000 RPM) (Gas) (Outboard)

Speedometers			
F39009	SE9945	4	Speedometer (60 MPH) (Pitot)

Indicators			
F19001	GP7683	2	Fuel Level Gauge (E-1/2-F)
F19002	GP7684	2	Oil Pressure Gauge (80 PSI)
F19007	OP1171	2	Water Pressure Gauge Kit (30 PSI)
F19003	GP7682	2	Water Temperature Gauge (100-250 F)
F19005	GP7681	2	Trim Gauge (Mercury/Mariner/Mercruiser/Volvo DP/Yamaha-2001 and newer)
F19020	MH0144	2	Hourmeter (10,000 hrs) (12-32 VDC)
F19004	VP7102	2	Voltmeter (10-16 VDC)



# PROFESSIONAL RED

Perimeter-lighted black dial with stylish red and white graphics, black aluminum bezel, tear-drop white pointer, and flat glass lens.



Catalog	Factory	Size	Description
<b>Depth Sounders</b>			
F12850	DS0101	2	Depth Sounder (Transom Mounted Transducer)
F12851	DS0101	2	Depth Sounder (In-Hull Mounted Transducer)

<b>Tachometers</b>			
F34607	TC9933	4	Tachometer (6000 RPM) (Gas) (Inboard & I/O)
F34617	TC9026	4	Tachometer (7000 RPM) (All outboard)
F34650	TC9934	4	Tachometer (7000 RPM) with SystemCheck Indicator (Gas) (I/E Outboard)

<b>Speedometer</b>			
F34611	SE9777	4	Speedometer (60 mph) (Pitot)

<b>Indicators</b>			
F14601	GP7282	2	Fuel Level Gauge (E-1/2-F)
F14602	GP7063	2	Oil Pressure Gauge (80 PSI)
F14612	OP1057	2	Water Pressure Gauge Kit (30 PSI)
F14604	GP7166	2	Water Temperature Gauge (100-250 F)
F14607	GP7422	2	Trim Gauge (Mercury/Mariner/Mercruiser/Volvo DP/ Yamaha-2001 and newer)
F14613	MH0232	2	Hourmeter [Digital] (12-32 volts)
F14605	VP7042	2	Voltmeter (10-16 VDC)

# EURO WHITE

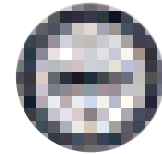
Perimeter-lighted white dial with bold black graphics, black aluminum bezel, contoured white pointer, and flat glass lens.

Catalog	Factory	Size	Description
KT9798	KT9798		<b>Boxed Set</b> - Inboard - Speedo (55 MPH) (Mech)   Tach (6000 RPM)   Fuel Level   Voltmeter (10-16 VDC)   Water Temp (100-250 F)   Oil PSI (80 PSI)
KT9795	KT9795		<b>Boxed Set</b> - Outboard - Speedo (55 MPH) (Mech)   Tach (7000 RPM)   Fuel Level   Voltmeter (10-16 VDC)

Tachometers			
F32904	TC9679	4	Tachometer (6000 RPM) (Gas) (Inboard & I/O)
F32905	TC9003	4	Tachometer (7000 RPM) (All outboard)
F32942	TD9123	4	Tachometer (4000 RPM) (Diesel) (Mechanical takeoff & var ratio alt)
F32950	TC9886	4	Tachometer (7000 RPM) with SystemCheck Indicator (Gas) (J/E Outboard)

Speedometers			
F32909	SE9473	4	Speedometer (55 MPH) (Pitot)

Indicators			
F12901	GP9358	2	Fuel Level Gauge (E-1/2-F)
F12902	GP9596	2	Oil Pressure Gauge (80 PSI)
F12903	OP1005	2	Water Pressure Gauge Kit (30 PSI)
F12910	GP9439	2	Cylinder Head Temperature (60 - 220 F) with sender
F12904	GP9119	2	Water Temperature Gauge (100-250 F)
F12916	GP9709	2	Trim Gauge (Mercury/Mariner/Mercruiser/Volvo DP/Yamaha-2001 and newer)
F12915	GP9708	2	Trim Gauge (J/E/Suzuki Outboard)
F12913	MH0243	2	Hourmeter [Digital] (12-32 volts)
F12911	VP9136	2	Voltmeter (10-16 VDC)





# CORAL

Perimeter-lighted black dial with stylish white and blue graphics, black aluminum bezel with burnished leading edge, contoured white pointer, and flat glass lens.



Catalog	Factory	Size	Description
<b>Tachometers</b>			
F33004	TC9493	4	Tachometer (6000 RPM) (Gas) (Inboard & I/O)
F33005	TC9036	4	Tachometer (7000 RPM) (All outboard)

<b>Speedometers</b>			
F33009	SE9216	4	Speedometer (55 MPH) (Pitot)

<b>Indicators</b>			
F13001	GP9346	2	Fuel Level Gauge (E-1/2-F)
F13020	GP9390	2	Fuel Level Gauge (Metric)
F13002	GP9527	2	Oil Pressure Gauge (80 PSI)
F13003	OP1000	2	Water Pressure Gauge Kit (30 PSI)
F13009	GP9405	2	Cylinder Head Temperature (60 - 220 F) with sender
F13004	GP9461	2	Water Temperature Gauge (100-250 F)
F13017	GP9348	2	Trim Gauge (Mercury/Mariner/Mercruiser/Volvo DP/Yamaha-2001 and newer)
F13016	GP9273	2	Trim Gauge (J/E/Suzuki Outboard)
F13013	MH0024	2	Hourmeter [Digital] (12-32 volts)
F13010	VP9106	2	Voltmeter (10-16 VDC)



# EURO

Perimeter-lighted black dial with bold white graphics, black aluminum bezel, contoured white pointer, and flat glass lens.

Catalog	Factory	Size	Description
KT9799	KT9799		<b>Boxed Set</b> - Inboard - Speedo (55 MPH) (Mech)   Tach (6000 RPM)   Fuel Level   Voltmeter (10-16 VDC)   Water Temp (100-250 F)   Oil PSI (80 PSI)
KT9796	KT9796		<b>Boxed Set</b> - Outboard - Speedo (55 MPH) (Mech)   Tach (7000 RPM)   Fuel Level   Voltmeter (10-16 VDC)

## Depth Sounders

F12850	DS0101	2	Depth Sounder (Transom Mounted Transducer)
F12851	DS0101	2	Depth Sounder (In-Hull Mounted Transducer)

## Tachometers

F32804	TC9643	4	Tachometer (6000 RPM) (Gas) (Inboard & I/O)
F32805	TC9011	4	Tachometer (7000 RPM) (All outboard)
F32842	TD9122	4	Tachometer (4000 RPM) (Diesel) (Mechanical takeoff & var ratio alt)
F32803	TD9671	4	Tachometer (4000 RPM) (Diesel) (Mag Pick-Up)
F32832	TC9122	4	Tachometer with Hourmeter (6000 RPM) (Gas) (Inboard)
F32840	TCH015	4	Tachometer with Hourmeter (7000 RPM) (Gas) (Outboard)
F32834	TD9102	4	Tachometer with Hourmeter (4000 RPM) (Diesel) (Mech takeoff & var ratio alt)
F32850	TC9951	4	Tachometer (7000 RPM) with SystemCheck Indicator (Gas) (J/E Outboard)

## Speedometers

F32810	SE9463	4	Speedometer (55 MPH) (Mechanical)
F32812	SE9460	4	Speedometer (80 MPH) (Mechanical)

## GPS Speedometers

F32816	SGP110	4	Speedometer (60 MPH) (GPS) (Studded)
--------	--------	---	--------------------------------------

## Multi-Function Instruments

F32851	GF0001	4	Multifunction [Fuel Level   Oil PSI (80 PSI)   Water Temp (100-250 F)   Voltmeter (10-16 VDC)]
--------	--------	---	--





### Indicators

F12801	GP9357	2	Fuel Level Gauge (E-1/2-F)
F12802	GP9322	2	Fuel Level Gauge (Metric)
F12830	GP9324	2	Tank Level Gauge (Potable water)
F12831	GP9326	2	Tank Level Gauge (Potable water) (Metric)
F12803	GP9599	2	Oil Pressure Gauge (80 PSI)
F12845	GP9597	2	Oil Pressure Gauge (100 PSI)
F12805	GP9511	2	Oil Pressure Gauge (5 BAR) (Metric)
F12810	OP1004	2	Water Pressure Gauge Kit (30 PSI)
F12875	OP1014	2	Water Pressure Gauge Kit (60 PSI)
F12819	GP9438	2	Cylinder Head Temperature (60 - 220 F) with sender
F12812	GP9118	2	Water Temperature Gauge (100-250 F)

### Blank Gauges

F32861	TC9640	4	Blank gauge fill
F12861	AP9475	2	Blank gauge fill
F12814	GP9124	2	Water Temperature Gauge (40-120 C) (Metric)
F12828	GP9374	2	Trim Gauge (Mercury/Mariner/Mercruiser/Volvo DP/ Yamaha-2001 and newer)
F12827	GP9305	2	Trim Gauge (J/E/Suzuki Outboard)
F12822	AP9523	2	Ammeter (60-0-60)
F12823	VP7901	2	Battery Condition Indicator (12 VDC)
F12825	CL1008	2	Clock (Quartz) (Analog)
F12835	MH0232	2	Hourmeter [Digital] (12-32 volts)
F12833	GP7373	2	Rudder Angle Indicator
F12821	VP9134	2	Voltmeter (10-16 VDC)
F12860	VP9191	2	Voltmeter (20-32 VDC)

# DRESS WHITE

Perimeter-lighted white dial with bold black graphics, white aluminum bezel, contoured black pointer, and flat glass lens.

Factory	Size	Description
KT9797	KT9797	<b>Boxed Set</b> - Inboard - Speedo (55 MPH) (Mech)   Tach (6000 RPM)   Fuel Level   Voltmeter (10-16 VDC)   Water Temp (100-250 F)   Oil PSI (80 PSI)
KT9794	KT9794	<b>Boxed Set</b> - Outboard - Speedo (55 MPH) (Mech)   Tach (7000 RPM)   Fuel Level   Voltmeter (10-16 VDC)

## Depth Sounders

F13150	DS0114	2	Depth Sounder (Transom Mounted Transducer)
F13151	DS0114	2	Depth Sounder (In-Hull Mounted Transducer)

## Tachometers

F33103	TC9691	4	Tachometer (6000 RPM) (Gas) (Inboard & I/O)
F33104	TC9038	4	Tachometer (7000 RPM) (All outboard)
F33132	TC9124	4	Tachometer with Hourmeter (6000 RPM) (Gas) (Inboard)
F33140	TCH013	4	Tachometer with Hourmeter (7000 RPM) (Gas) (Outboard)
F33150	TC9887	4	Tachometer (7000 RPM) with SystemCheck Indicator (Gas) (I/E Outboard)

## GPS Speedometers

F33147	SGP111	4	Speedometer (60 MPH) (GPS) (Studded)
--------	--------	---	--------------------------------------

## Speedometers

F33112	SE9475	4	Speedometer (55 MPH) (Pitot)
F33113	SE9476	4	Speedometer (80 MPH) (Pitot)

## Multi-Function Instruments

F33105	SY9618	4	Synchronizer (Dual Engine) Gas and Variable Ratio / Alternator type diesels only.
--------	--------	---	---





#### Indicators

F13101	GP9389	2	Fuel Level Gauge (E-1/2-F)
F13117	GP9722	2	Fuel Level Gauge (Metric)
F13102	GP9573	2	Oil Pressure Gauge (80 PSI)
F13108	OP1006	2	Water Pressure Gauge Kit (30 PSI)
F13113	GP9444	2	Cylinder Head Temperature (60 - 220 F) with sender
F13110	GP9120	2	Water Temperature Gauge (100-250 F)
F13122	GP9712	2	Trim Gauge (Mercury/Mariner/Mercruiser/Volvo DP/Yamaha-2001 and newer)
F13123	GP9711	2	Trim Gauge (J/E/Suzuki Outboard)
F13130	MH0240	2	Hourmeter [Digital] (12-32 volts)
F13120	VP9139	2	Voltmeter (10-16 VDC)



# GPS SPEEDOMETER

## WITH INTERNAL ANTENNA

The GPS Speedometer is a drop-in replacement for your current speedometer.

The GPS antenna is built-in to the instruments and does not require an external antenna. No additional hardware is required.

The Faria Beede GPS Speedometer uses a highly accurate 48 channel GPS receiver. You can be sure that the GPS Speedometer is giving you the most accurate GPS information available on the market today.

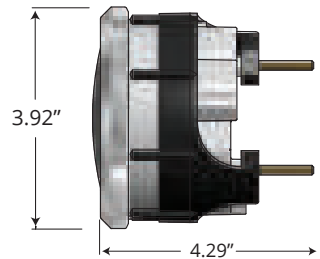
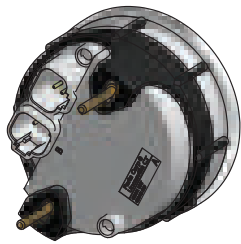
Speed is shown by an analog pointer. This pointer is driven by a digital stepper motor for increased accuracy and minimized pointer bounce.



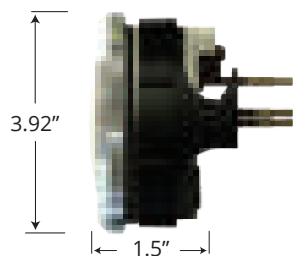
## Available in all styles\*

### Enclosures

#### Deutsch Connectors



#### Studded



### Deutsch Connectorized Harness

This premium style Speedometer is designed with the very latest technology. It is intended to fit directly into today's dash harnesses with easy Plug and Play connectors. Premium LED lighting and an optional diffused LCD display.

## FEATURES & BENEFITS

- Fits in standard 2" gauge cut-out
- Plug and play for easy installation
- 235kHz transducer results in highest performance depth sounder in the market even with varying bottom types / structures and at high speeds
- Available in all styles
- Oversized backlit display
- Standard depth only and premium depth + temperature versions available
- The transducer types listed matter
- Illuminates red at night
- 3-199' capability
- Audible alarm for shallow and deep alarms

### Studded Harness

The studded Speedometer offers an easy way to add GPS technology to your dash. Designed to fit into existing dash harnesses already installed. The Studded Speedometer connects directly to the battery and ground without the addition of a costly connector. Edge lit dials are easy to read in foul weather. Available in the more popular Faria Beede Classic styles.

# DEPTH SOUNDERS



## Features & Benefits

- Standard stuffed and premium plug and play connectorized versions available
- Available in most styles
- Internal stepper motor for smooth pointer sweep, less pointer bounce and improved reliability
- Easy installation - only 3 wires
- Internal antenna for improved accuracy and easy installation
- Available in 4" and 5" with and without LCD
- Linear scale for excellent low and high speed accuracy
- Available in multiple speed ranges
- Harnesses and connectors included.

**Dual Temperature Depth Sounder can display outside air temperatures, bait well or external water temperatures from 0 °C to 100 °C (32 °F to 200 °F).**

**Fits a standard 2 1/16" (53 mm) gauge mounting hole.**

## Accuracy at High Speeds

Our Engineers have incorporated the latest microprocessor technology and proprietary software designed to take advantage of today's high performance transducers. As a result this depth sounder outperforms all others on the market in its high speed capabilities and accuracy when faced with various bottom conditions.

The Depth Sounders from Faria offer a 3-199 foot (1-61meters) depth capability, with an automatic gain control, backlighting for maximum night vision, keel offset, and deep and shallow water alarms.

## Transducers

The Depth Sounder is available with either a Transom, In-Hull or Thru Hull mounted transducer.

Thru Hull Transducer



Transom Mount Transducer



In Hull Transducer



## Dual Temperature Depth Sounder

The dual display of the Dual Temperature Depth Sounder can also show temperature of the water, bait well or the ambient air temperature all from one 2" gauge.

## Senders and Transducers

The Dual Temperature Depth Sounder comes with a Transom mounted transducer and temperature sender.

Transom Mount Transducer



Temperature Sender



# STANDARD BOXED SETS



**Packaged and ready for the display counter.**

These Boxed Sets offer a complete set of gauges ready to install.

**Available in the following styles:**

- Chesapeake White Stainless Steel
- Chesapeake Black Stainless Steel
- Euro
- Euro White
- Dress White
- Platinum (Fog Resistant Lens)
- Spun Silver
- Kronos styles.

## Boxed Sets

Style	Factory	Description	Quantity
Newport SS FR - Red	KTF0200	Inboard Set	6 gauge
Newport SS FR - Red	KTF0201	Outboard Set	4 gauge
Platinum SS FR - Blue	KTF0186	Inboard Set	6 gauge
Platinum SS FR - Blue	KTF0185	Outboard Set	4 gauge
Euro	KT9799	Inboard Set	6 gauge
Euro	KT9796	Outboard Set	4 gauge
Euro White	KT9798	Inboard Set	6 gauge
Euro White	KT9795	Outboard Set	4 gauge
Dress White	KT9797	Inboard Set	6 gauge
Dress White	KT9794	Outboard Set	4 gauge
Chesapeake SS White	KTF001	Inboard Set	6 gauge
Chesapeake SS White	KTF002	Outboard Set	4 gauge
Chesapeake SS Black	KTF003	Inboard Set	6 gauge
Chesapeake SS Black	KTF004	Outboard Set	4 gauge
Kronos	KTF024	Inboard Set	6 gauge
Spun Silver	KTF0184	Inboard Set	6 gauge
Spun Silver	KTF0182	Outboard Set	4 gauge

## Boxed Sets with GPS Speedometers

Style	Factory	Description	Quantity
Chesapeake Black SS	KTF064	Inboard Set	6 gauge
Chesapeake White SS	KTF063	Inboard Set	6 gauge





# 5-INCH GAUGES & MULTIFUNCTION INDICATORS

Dashboards are getting more and more crowded as today's technology explodes on to our boats. Often there are so many beeps and buzzes it's hard to see just what's happening. Of course, you can fill up your dash with lots of little two inch discrete gauges but that too takes more space. That's why Faria Beede developed our multi-function gauge.

We've combined the most useful discrete gauges into a single instrument and then styled them to match many of our standard styles.

Catalog#	Factory #	Size	Style	Description
F33761	SGP501	5	Ches. Black SS	Speedometer (60 MPH) (GPS) (Studded)
F33763	TCH323	5	Ches. Black SS	Tachometer with Hourmeter (6000 RPM) (Gas)
F33762	GF4005	5	Ches. Black SS	Multifunction [Fuel, Oil PSI, Water Temp., Voltmeter]

Catalog#	Factory #	Size	Style	Description
F33861	SGP502	5	Ches. White SS	Speedometer (60 MPH) (GPS) (Studded)
F33863	TC9381	5	Ches. White SS	Tachometer with Hourmeter (6000 RPM) (Gas)
F33864	GF4004	5	Ches. White SS	Multifunction [Fuel, Oil PSI, Water Temp., Voltmeter]

## Universal Gas and Diesel

These tachometers are available for all ignition systems, alternators and diesel engines. Available with or without a digital hourmeter which records up to 999999.9 hours.

## SystemCheck Tachometer

Warning lights for No Oil, Engine Overheat, Check Engine and Low Oil.

## Suzuki Monitor Tachometer

Warning lights for Check Engine, Temperature, Oil Level and Rev Limit.

### 4 and 5 inch sizes with multiple range:

- 6000 RPM for Inboard and I/O engines
- 7000 RPM for all Outboard engines
- 4000 RPM for diesel engines



Tachometer with Digital Hourmeter



System Check Tachometer



Suzuki Monitor Tachometer



Suzuki Monitor Tachometer

# TELEMATICS



# TELEMATICS



## EntelNet WD100

Connected directly to the CAN Bus, Real-World data is sent by the EntelNet™ Wi-Fi module. The data, GPS speed, Map position, Instrument data and CAN error code information is displayed in an easy-to-read application built for the Android® operating system or via the built-in webpage which, can be view by any internet-compatible device.



## Sentry GPS WD310

Monitor your assets location and ambient temperature even without power. This small self contained device monitors your assets location with GPS and supports location with Cellular Tri-location using cellular tower information when GPS signal is not available. Battery operated and solar options are available.



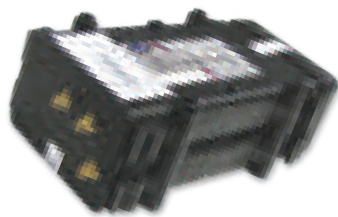
## Sentry GPS WD315

FB-Sentry and the WD315 is a complete web based tracking package providing GPS location for long term monitoring.



## Sentry WD500

FB-Sentry and the WD500 is a complete tracking and remote monitoring package for your boat. FB-Sentry allows you to view all of your boat's vital systems and critical engine data directly in the palm of your hand.



## Dual-Band MTU WD750

The WD750 VMS DB (Vessel Monitoring System) is a dual mode Iridium® Satellite (SBD) and GSM/GPRS platform designed to provide near real-time position reporting, and offers a cost-effective messaging, e-mail and Activity Code Declaration and Catch & Notification Forms reporting solution.

# TRANSDUCERS & ACCESSORIES



## Retractable Tri-ducer/ Thru-Hull Transducer

SN2031

Depth / Paddle Wheel Speed  
/ Temperature Sensor  
1 5/8" thru hull depth transducer.  
(Requires 1 5/8" hole in vessel.)



## Thru-hull Transducer

SN2060A

1 5/8" thru hull depth  
transducer.  
(Requires 1 5/8" hole in  
vessel.)



## Transom Mounted Depth Transducer

SN2011

With a low profile this depth unit offers little drag and easy installation for dead rise angles up to 30°. Designed with a release bracket to protect against impact damage. This unit provides good high speed operations up to 55 knots.



## Adjustable In hull Transducer

SN2010

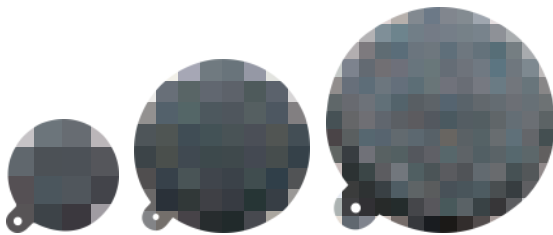
This in-hull transducer has a patented adjustable feature which ensures that sound waves are transmitted vertically to the bottom on almost any hull with a dead rise up to 22°. With no hull penetration, installation is easy and high speed performance is maximized.



## Thru-hull Flush Mounted Temperature and Speed Sender

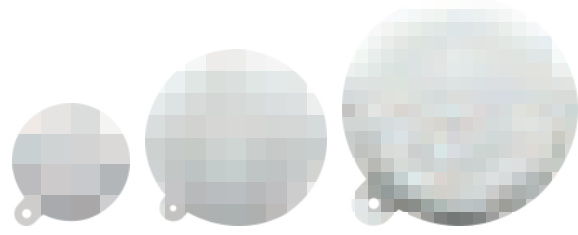
SN0015

Perfect for water sports which require continuous accurate speed measurements like water-skiing, where boat angles can sometimes interrupt transom mounted senders. The thru-hull flush mounted temperature and speed sender offer virtually no drag. Easy installation and accuracy makes this sender the perfect choice for water sports. (Requires 1 5/8" hole in vessel.)



## Covers - Black

CV0068, CV0069, CV0070



## Covers - White

CV0065, CV0069, CV0067

# SENDERS

Combined with our Depth Sounders and other electronic instrumentation these transducers and senders offer a wide range of options to fit your needs.

## Temperature Senders

- 1/8" NPTF
- A wide variety of sender types
- Metric and standard values available

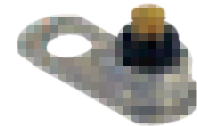
Catalog	Factory	Description
F90401	TS1029	SENDER (Temperature) (1/8) (American Single Standard)
F90402	TS2035	SENDER (Temperature) (1/4) (American Single Standard)
F90403	TS3044	SENDER (Temperature) (3/8) (American Single Standard)
F90404	TS4042	SENDER (Temperature) (1/2) (American Single Standard)
F90406	TS1056	SENDER (Temperature) (1/8) (American Dual Standard)
F90412	TS1058	SENDER (Temperature) (1/8) (European Single Standard)
F90405	TS5026	SENDER (Cylinder Head Temperature)



## Pressure Senders

- 1/8" NPTF
- A wide variety of sender types
- Metric and standard values available

Catalog	Factory	Description
F90512	SD0003	SENDER (Oil Pressure) (1/8 NPTF American 80 PSI) (Single Standard)
F90511	SD0025	SENDER (Oil Pressure) (1/8 NPTF American 80 PSI) (Dual Standard)
F90516	SD0031	SENDER (Oil Pressure) (1/8 NPTF European 5 BAR) (Single Float)
F90519	SD0006	SENDER (Oil Pressure) (1/8 NPTF American 100 PSI) (Single Standard)
F90526	SD0035	SENDER (Oil Pressure) (1/8 NPTF European 10 BAR) (Single Standard)



## Other Senders

Catalog	Factory	Description
F90530	SD0041	SENDER (Rudder Angle) (Single station) (Standard or Floating ground)
F90901	DK9005	SENDER (Tachometer) (Diesel) (Mechanical takeoff)



# REPAIR POLICY



NEWPORT PG. 9

*Repair costs can get expensive.*

## **Restore • Replace • Rebuild • Repower**

*with Boxed Sets from Faria Beede. A cost effective OEM gauge replacement option.*



For more information go to  
**[warranty.fariabeede.com](http://warranty.fariabeede.com)**

## **Boxed Sets**

Boxed Sets offer a complete set of instruments and everything you need to replace your old OEM installed instruments.

With many styles to choose from, Faria Beede has the look you want and savings that is easy on the budget.

When upgrading your engine don't forget about your instruments.

Faria Beede has an easy plug and play instrument replacement set that works with your new engine.

## **Faria Beede Limited Warranty**

During the first 36 months from the date of original retail purchase (12 month for fog resistant lens – reference IS0374 for reducing instrument fogging) Riverside Mfg, LLC will repair or replace any instrument(s) that fails due to defects in materials or workmanship at no charge. Warranty coverage shall deviate from this document only upon written agreement signed by authorized representatives of the parties.

# SPECIFICATIONS

Our instruments are manufactured by Faria Beede Instruments, Inc. in Connecticut and Indiana, USA. We are an ISO:9001-2015 registered company. Our instruments and senders are built to strict standards and have passed a comprehensive quality control procedure prior to shipment. Each instrument is backed by the Faria Beede Limited Warranty.

## 4" & 5" Electronic Instruments

Operating Temperature	-4 °F to +158° F (-20° C to +70° C)
Storage Temperature	-22° F to +185° F (-30° C to +85° C)
Lighting	See product line for specific information
Operating Voltage	11.5 to 16 volts
Nominal Voltage	14.2 volts
Current Consumption	< 100 mA, without illumination
Bezel	Stainless Steel or Aluminum - see product line for specific information
Lens	Glass or Poly carbonate - see product line for specific information
Connection	Studs, blade terminals, connectors - see product line for specific information
Mounting Bracket	Plastic mounting clamp. Clamping range 0 -.8" (0-20 mm)
Torque	5 to 7 inch pounds (.57 - .80 Nm)
Mounting Hole	3 3/8" (85 mm) for 4" Instrument - 4 3/8" (112 mm) for 5" Instrument

## 4" & 5" Mechanical Instruments

Operating Temperature	-22° F to +185° F (-30° C to +85° C)
Storage Temperature	-40° F to +221° F (-40° C to +105° C)
Lighting	See product line for specific information
Bezel	Stainless Steel or Aluminum - see product line for specific information
Lens	Glass or Poly carbonate - see product line for specific information
Connection	Studs, blade terminals - see product line for specific information
Mounting Bracket	Plastic mounting clamp. Clamping range 0 -.8" (0-20 mm)
Torque	5 to 7 inch pounds (.57 - .80 Nm)
Mounting Hole	3 3/8" (85 mm) for 4" Instrument - 4 3/8" (112 mm) for 5" Instrument

## 2" Electronic Instruments

Operating Temperature	-4 °F to +158°F (-20° C to +70° C)
Storage Temperature	-22° F to +185°F (-30° C to +85° C)
Lighting	See product line for specific information
Operating Voltage	11.5 to 16 volts
Nominal Voltage	14.2 volts
Current Consumption	< 100 mA, without illumination
Bezel	Stainless Steel or Aluminum - see product line for specific information
Lens	Glass or Poly carbonate - see product line for specific information
Connection	Studs, blade terminals, connectors - see product line for specific information
Mounting Bracket	Plastic mounting clamp. Clamping range 0 -.8" (0-20 mm)
Torque	5 to 7 inch pounds (.57 - .80 Nm)
Mounting Hole	2 1/16" (53 mm) for 2" Instrument

## 2" Mechanical Instruments

Operating Temperature	-22 ° F to +185°F (-30° C to +85° C)
Storage Temperature	-40 ° F to +221°F (-40° C to +105° C)
Lighting	See product line for specific information
Bezel	Stainless Steel or Aluminum - see product line for specific information
Lens	Glass or Poly carbonate - see product line for specific information
Connection	Studs, blade terminals - see product line for specific information
Mounting Bracket	Plastic clamp, metal on water pressure. Clamping range 0 -.8" (0-20 mm)
Torque	5 to 7 inch pounds (.57 - .80 Nm)
Mounting Hole	2 1/16" (53 mm) for 2" Instrument



[riversidemfg.com](http://riversidemfg.com) & [fariabeede.com](http://fariabeede.com)

---

Faria Beede Instruments, Inc. | North Stonington, CT 06359

Phone: 860.848.9271 | Fax: 860.848.2704